

## Installation & Operation Guide

NOX filter is designed to filter polluted air entering domestic or commercial buildings through mechanical ventilation systems. The compact system uses combined particulate and gas filters to reduce levels of Nitrogen Dioxide and Particulate Matter to within target limits making the air safer to breathe.



### GENERAL RECOMMENDATIONS:

- ✓ The lift off doors are held in position by M6 Socket Button Screws, which are conventionally threaded. An allen key / hex key will be required to remove the doors.
- ✓ NOX Filtration Units accommodate **Gas Filters** fitted within slide rails.
- ✓ Withdraw and dispose of the dirty filter(s), and replace with new.
- ✓ The access door also seals the filter unit from air leaks and by pass of the filters and must be fitted securely using all fixing cap head threaded bolts provided.

### MAINTENANCE:

#### Gas Filters

Gas Filters are of a metal construction and contain a unique carbon / chemical blend designed to remove pollutant gases. The gas filters offer a maximum life expectancy of 2 years, but this can vary depending on pollution concentrations being drawn through the filters.

#### Air Filter Replacement and Access

The Gas Filters within the NOX Filter have an expected life of two years in typical city environments when installed after an MVHR system or Air Handling Unit containing pre filtration. Where pre filtration is not available, the filters are expected to last a minimum of six months prior to a significant reduction in system air flow.

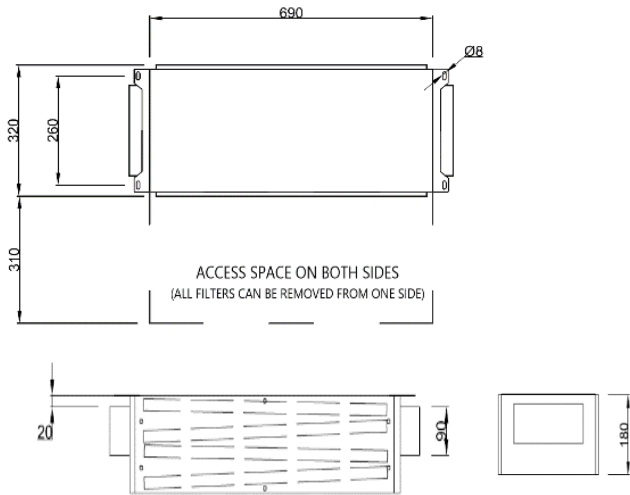
### INSTALLATION INSTRUCTIONS:

- ✓ The NOX Filter System should be positioned and fitted in the supply air ductwork on either the positive or negative pressure side of the fan.
- ✓ Can be installed horizontally or vertically
- ✓ Air Filters will require changing, so consideration to access panels and installation space should be made.

## Installation & Operation Guide

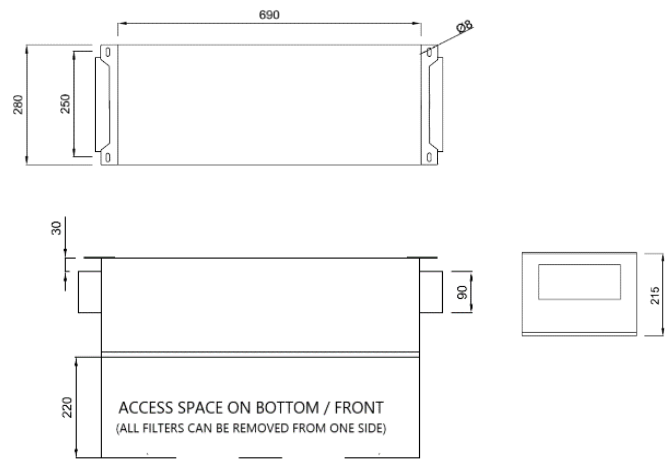
### DIMENSIONS / HOLES [mm]:

#### NOX 50 SA



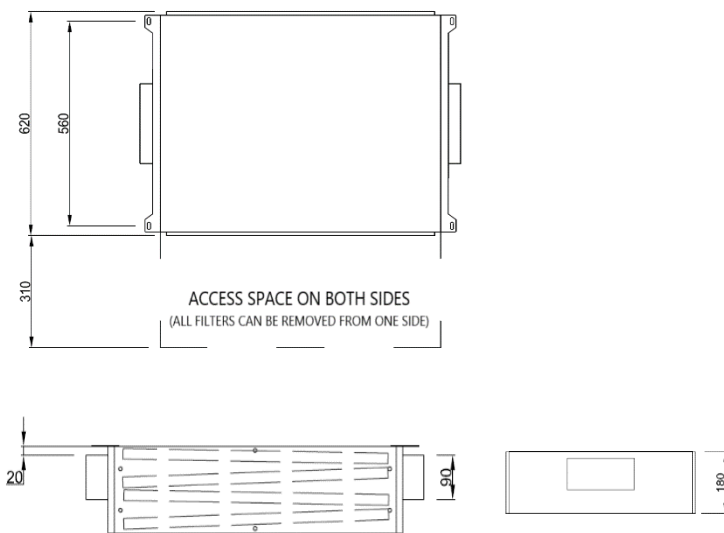
Air filter NOX 50 SA: 320 x 690 x 180 mm

#### NOX 50 BA



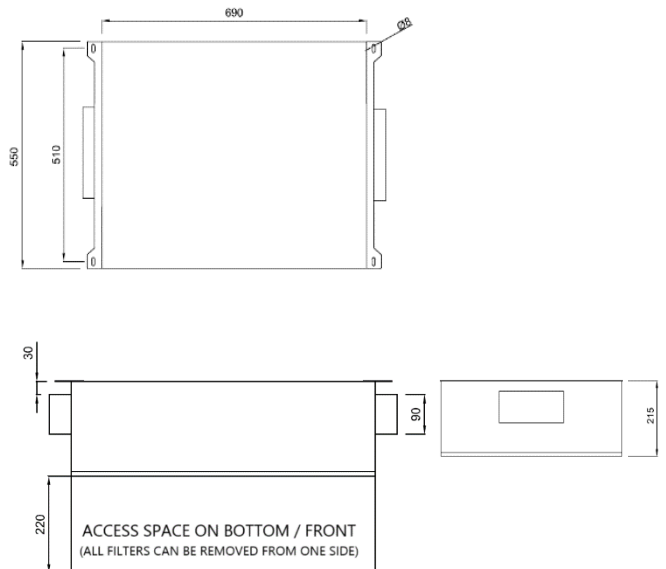
Air filter NOX 50 BA: 280 x 690 x 215 mm

#### NOX 100 SA



Air filter NOX 100 SA: 620 x 690 x 180 mm

#### NOX 100 BA



Air filter NOX 100 BA: 550 x 690 x 215 mm

## Installation & Operation Guide

### SAFETY:

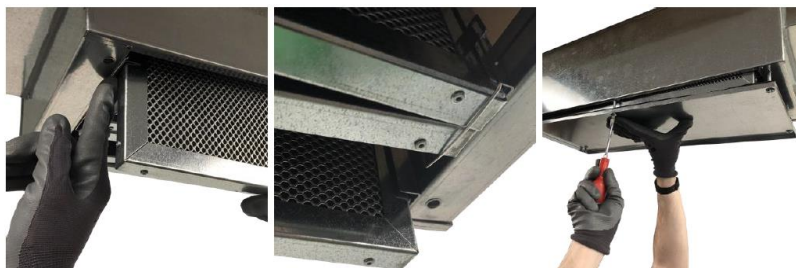
- ✓ Installation of the NOX Filtration System should be carried out by a trained engineer.
- ✓ It is recommended that industrial gloves, overalls, eye protection and nuisance dust masks are utilised when changing filters which have been subjected to natural air, as opposed to air drawn from processes, where full risk assessments should be performed prior to changing. For some filter locations, an assessment regarding manual handling will need to be made, for example where ladders are required, or they are installed above shoulder height.
- ✓ Changing of filters should be carried out by experienced or trained personnel, in accordance with safety requirements as defined by the "Control of Substances Hazardous to Health" (COSHH) Regulations. ie. Someone who fully understands the design, operation and implications of the product and its use.

### For Bottom Access Units



**FALLING OBJECT RISK**  
When removing this cover beware of falling filters.  
When replacing filters ensure holding clips are correctly in place

- ✓ For bottom access NOX Filter Units there is a risk of the filters falling on the operator when removing the door. Additional care must be taken when removing the door.
- ✓ When replacing the filters, push the holding clips out of the way to slide the filters in and out of the unit.
- ✓ Before securing the access door, ensure holding clips are in the correct position with one clip holding the outer filters, and two clips holding the inner filters.
- ✓ The filters will hang out the bottom of the unit, securing the door will push them up into position.



### Disposal of Air Filters Including Personal Protective Equipment

- Filters and PPE which has been damaged prior to use can be disposed of as normal domestic / industrial waste.
- Filters and PPE soiled with exterior air can be disposed of as normal domestic / industrial waste.