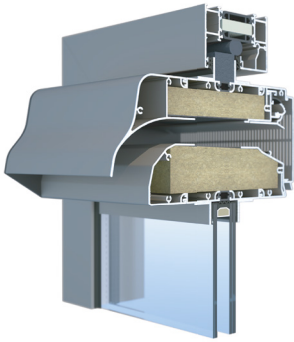


airvent 
DGL SUPER
 GLAZED IN ACOUSTIC VENT



Airvent DGL SUPER is the ultimate glazed in or transom mounted acoustic solution. It can offer acoustic performance up to 55dB sound reduction and offers an excellent range of airflow options.

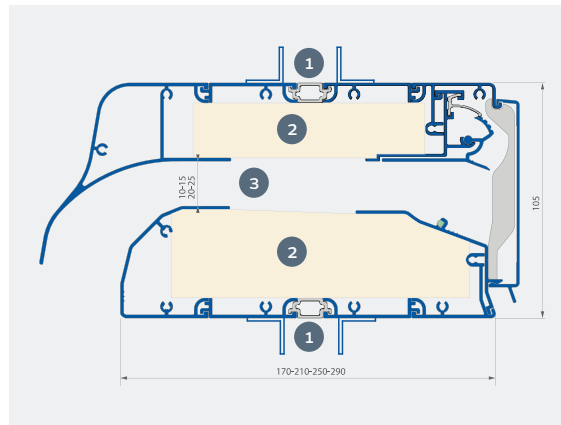
FEATURES:

- ✓ Glazed in or transom mounting
- ✓ Exceptional acoustic performance up to 55dB Dnew in open position
- ✓ Airflow options with full control
- ✓ Fantastic noise reduction. 290-10 gives 55dB Dnew
- ✓ Various airflow options
- ✓ Caters for all glass thicknesses

DETAILS:

- 1 Thermal break. Position can be varied to suit situation
- 2 Acoustic material absorbs noise
- 3 4 different air inlet sizes available

CROSS SECTION:



Equivalent Area⁽¹⁾ [mm²/m]

| | |
|------------------|-------|
| DGL SUPER 170-10 | 17433 |
| DGL SUPER 170-15 | 28759 |
| DGL SUPER 170-20 | 35376 |
| DGL SUPER 170-25 | 38939 |
| DGL SUPER 210-10 | 17561 |
| DGL SUPER 210-15 | 26723 |
| DGL SUPER 210-20 | 34230 |
| DGL SUPER 210-25 | 36903 |
| DGL SUPER 250-10 | 16034 |
| DGL SUPER 250-15 | 25196 |
| DGL SUPER 250-20 | 33976 |
| DGL SUPER 250-25 | 36139 |
| DGL SUPER 290-10 | 15270 |
| DGL SUPER 290-15 | 25323 |
| DGL SUPER 290-20 | 33721 |
| DGL SUPER 290-25 | 34103 |

| AIRVENT DGL SUPER | 170 | 210 | 250 | 290 |
|--|--|--|--|--|
| Air flow air inlet 10 mm | | | | |
| Q at 1 Pa | 13.7 l/s/m | 13.8 l/s/m | 12.6 l/s/m | 12.0 l/s/m |
| q1 at 2 Pa | 20.56 l/s/m | 20.83 l/s/m | 20.56 l/s/m | 18.61 l/s/m |
| q1 at 10 Pa | 74 l/s/m | 75 l/s/m | 74 l/s/m | 67 l/s/m |
| Air flow air inlet 15 mm | | | | |
| Q at 1 Pa | 22.6 l/s/m | 21.0 l/s/m | 19.8 l/s/m | 19.9 l/s/m |
| q1 at 2 Pa | 33.05 l/s/m | 32.5 l/s/m | 31.11 l/s/m | 30.55 l/s/m |
| q1 at 10 Pa | 119 l/s/m | 117 l/s/m | 115 l/s/m | 110 l/s/m |
| Air flow air inlet 20 mm | | | | |
| Q at 1 Pa | 27.8 l/s/m | 26.9 l/s/m | 26.7 l/s/m | 26.5 l/s/m |
| q1 at 2 Pa | 40 l/s/m | 40.55 l/s/m | 39.44 l/s/m | 38.89 l/s/m |
| q1 at 10 Pa | 144 l/s/m | 146 l/s/m | 142 l/s/m | 140 l/s/m |
| Air flow air inlet 25 mm | | | | |
| Q at 1 Pa | 30.6 l/s/m | 29.0 l/s/m | 28.4 l/s/m | 26.8 l/s/m |
| q1 at 2 Pa | 45.28 l/s/m | 44.17 l/s/m | 44.17 l/s/m | 43.05 l/s/m |
| q1 at 10 Pa | 163 l/s/m | 159 l/s/m | 159 l/s/m | 155 l/s/m |
| Control options | Lever or Rod (up to 2m) | | | |
| U-value | 4.5 W/m ² *K | 4.6 W/m ² *K | 4.6 W/m ² *K | 4.7 W/m ² *K |
| Acoustic insulation Dn, e, w (C, Ctr) , Air inlet 10 mm | Open 42 (-1;-3) dB Closed 51 (-1;-4) dB | Open 46 (-1;-4) dB Closed 51 (-1;-4) dB | Open 51 (-1;-6) dB Closed 55 (-2;-6) dB | Open 55 (-1;-5) dB Closed 59 (-2;-6) dB |
| Acoustic insulation Dn, e, w (C, Ctr) , Air inlet 15 mm | Open 40 (-1;-3) dB Closed 53 (-1;-4) dB | Open 43 (-1;-3) dB Closed 55 (-1;-4) dB | Open 46 (-2;-5) dB Closed 55 (-1;-5) dB | Open 48 (-1;-5) dB Closed 56 (-2;-6) dB |
| Acoustic insulation Dn, e, w (C, Ctr) , Air inlet 20 mm | Open 37 (0;-2) dB Closed 48 (-2;-4) dB | Open 40 (-1;-2) dB Closed 52 (-2;-4) dB | Open 43 (-1;-4) dB Closed 53 (-1;-4) dB | Open 46 (-1;-5) dB Closed 55 (-3;-5) dB |
| Acoustic insulation Dn, e, w (C, Ctr) , Air inlet 25 mm | Open 35 (0;-2) dB Closed 45 (-1;-3) dB | Open 38 (-1;-2) dB Closed 55 (-1;-4) dB | Open 41 (-1;-4) dB Closed 50 (-1;-4) dB | Open 43 (-1;-5) dB Closed 53 (-1;-4) dB |
| Water resistance - In closed position | 900 Pa | | | |
| Trickle Ventilation (airflow in the closed position at 50pa) | <15% | | | |
| Glass reduction | 133 mm | | | |
| Maximum dimensions under warranty | 2500mm transom installation / 2000mm glazed in | | | |
| End cap dimension | 6 mm | | | |



(1) Value for non self regulating version, according to EN 13141-1

Custom RAL, dual colour (internal/external) and stock colours available. See pricelist for more details.