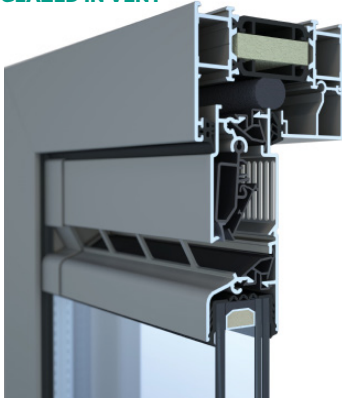


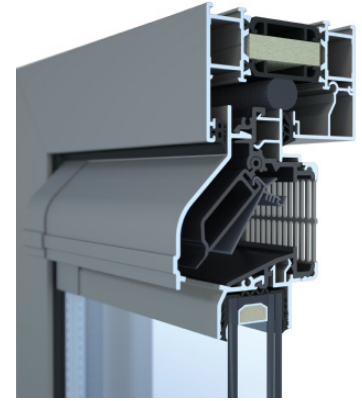
airvent
DG80 / DGL80 / DG80 EX
DGL80 EX
GLAZED IN VENT

Airvent DG / DGL 80 (EX) is an 80mm glazed in vent with flat or hooded options. When you need a glazed in vent that can offer great performance and can cope with glazing thicknesses up to 47mm this is your choice.

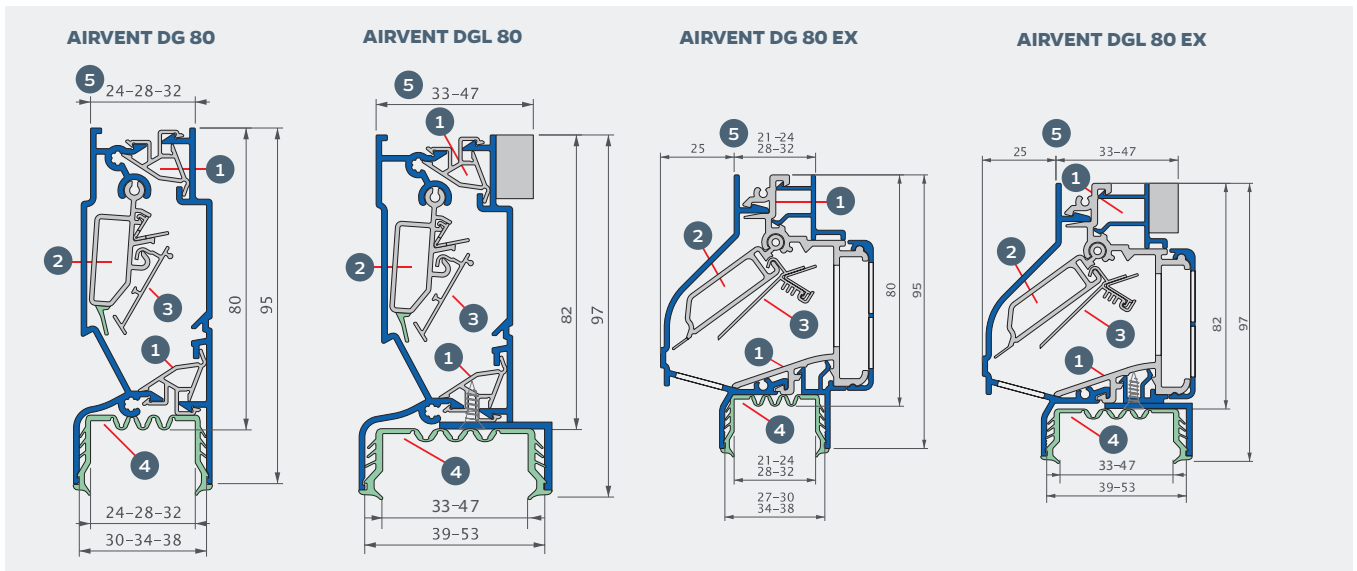


FEATURES:

- ✓ Over 15,000mm² per metre airflow
- ✓ Self regulation flap to avoid draughts
- ✓ Thermally broken
- ✓ Suitable for thick glazing options.
- ✓ Lever control
- ✓ Hooded or flat options



CROSS SECTION:



DETAILS:

- 1 Thermal break;
- 2 Internal closing valve, adjustable in 5 positions
- 3 Self-regulating valve to ensure a uniform air supply
- 4 Customised glazing gasket
- 5 Available in different glass thicknesses

| AIRVENT DG/DGL 80 | | AIRVENT DG/DGL 80EX |
|---|--|--|
| 15016 mm ² /m | Equivalent Area ⁽¹⁾ | 15270 mm ² /m |
| 11.8 l/s/m | Air flow Q at 1 Pa | 12.0 l/s/m |
| 16.94 l/s/m | Air flow q1 at 2 Pa | 14.72 l/s/m |
| 21.39 l/s/m | Air flow q1 at 10 Pa | 18.61 l/s/m |
| Lever or Rod (up to 2m) | Control options | 5 different positions |
| Yes | Self-regulation | Yes |
| 3.8 W/m ² K | U-value | 4.02 W/m ² .K |
| 27 (0;-1) dB | Acoustic insulation Dn, e, w (C, Ctr) | 26 (0;-1) dB |
| 38 (-1;-1) dB | — In open condition | 40 (-1;-1) dB |
| | — In closed position | |
| 700 Pa | Water Tightness | 750 Pa |
| <15% | — In closed position | |
| 0.080 m ² /m | Trickle Ventilation (airflow in the closed position at 50pa) | <15% |
| 80 mm | Surface area | 0.080 m ² /m |
| 95 mm | Glass reduction | 80 mm |
| | Installation height | 94 mm |
| 24/28/32/33-47 mm (with dry glazing gasket or silicone seal) | Suitable for glass thicknesses | 21/24/28/32/33-47 mm (with dry glazing gasket or silicone seal) |
| 2500 mm | Maximum dimensions under warranty* | 2500 mm |
| 80 mm | End cap dimension | 90 mm |

(1) Value for non self regulating version, according to EN 13141-1 * Not valid for larger glass thicknesses.