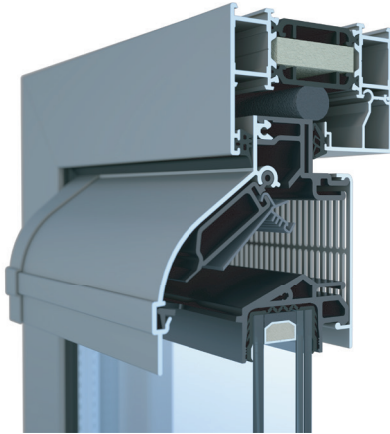


airvent

DG75 / DG75 EX

GLAZED IN VENT



Airvent DG75 (EX) is a thermally broken glazed in vent with sleek lines and different airflow options. When you need a glazed in vent the DG75 can cope with most situations. with options for very high airflow and excellent weatherability. Ideal for glazing thickness up to **32mm**.

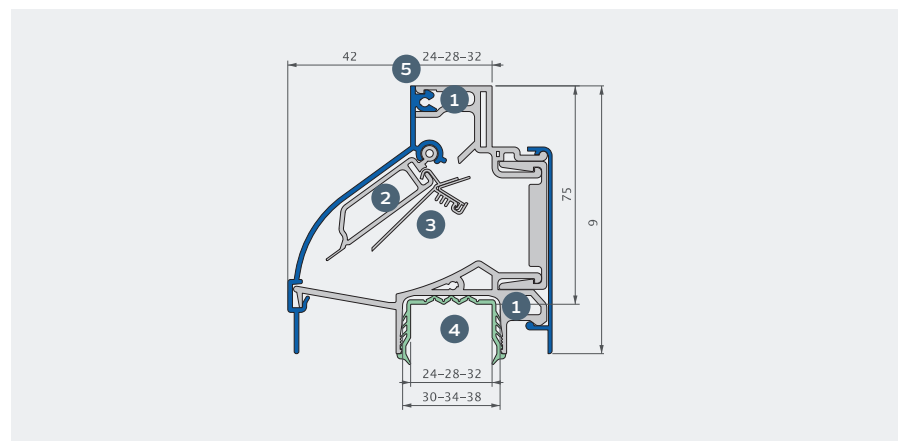
FEATURES:

- ✓ 5 airflow options available by offering differing grille perforations.
- ✓ Inner insect grille removable for cleaning
- ✓ High airflow options available: Up to 24,432mm² EA per m;
- ✓ Thermally broken;
- ✓ Self regulating airflow;
- ✓ Insect Grille
- ✓ Rod control option;
- ✓ Manufactured from extruded aluminium;
- ✓ 10 Year Guarantee.

DETAILS:

- 1 Thermal break
- 2 Internal operation, 5 position lever control
- 3 Patented self-regulating valve to ensure a uniform air supply
- 4 Customised glazing gasket
- 5 Available in different glass thicknesses

CROSS SECTION:



| AIRVENT DG75 (EX) | 75/12 | 75/18 | 75/24 | 75/16 EX | 75/21 EX |
|--|--|--------------------------|--------------------------|--------------------------|--------------------------|
| Equivalent Area ⁽¹⁾ | 12089 mm ² /m | 18451 mm ² /m | 24432 mm ² /m | 16415 mm ² /m | 21760 mm ² /m |
| Air flow Q at 1 Pa | 9.5 l/s/m | 14.5 l/s/m | 19.2 l/s/m | 12.9 l/s/m | 17.1 l/s/m |
| Air flow q1 at 2 Pa | 13.89 l/s/m | 21.11 l/s/m | 29.17 l/s/m | 19.44 l/s/m | 26.67 l/s/m |
| Air flow q1 at 10 Pa | 31.94 l/s/m | 48.05 l/s/m | 66.11 l/s/m | 16.39 l/s/m | 27.22 l/s/m |
| Control options | Lever or Rod (up to 2m) | | | | |
| Self-regulation | No | | | Yes | |
| U-value | 2.68 W/m ² K | | | | |
| Acoustic insulation Dn, e, w (C, Ctr) | | | | | |
| — In open condition | 26 (0;-1) dB | | | | |
| — In closed condition | 36 (-1;-3) dB | | | | |
| Water Tightness | | | | | |
| — in closed position | 750 Pa | | | | |
| Trickle Ventilation (airflow in the closed position at 50pa) | <15% | | | | |
| Surface area | 0.075 m ² /m | | | | |
| Glass reduction | 75 mm | | | | |
| Installation height | 92 mm | | | | |
| Suitable for glass thicknesses | 24 - 28 - 32 mm (with dry glazing gasket) / 38 mm (with silicone seal) | | | | |
| Maximum dimensions under warranty | 2500 mm | | | | |
| End cap dimension | 85 mm | | | | |

(1) Value for non self regulating version, according to EN 13141-1

