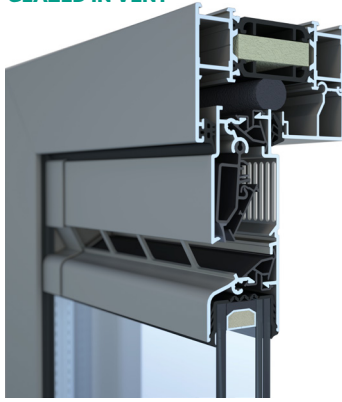


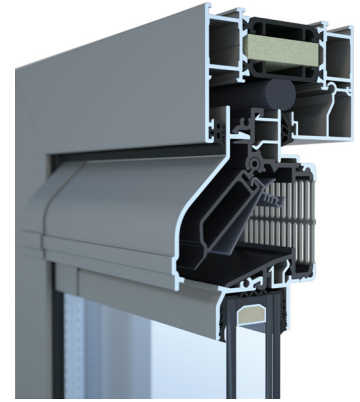
**airvent**  
**DG80 / DGL80 / DG80 EX**  
**DGL80 EX**  
**GLAZED IN VENT**

**Airvent DG / DGL 80 (EX)** is an 80mm glazed in vent with flat or hooded options. When you need a glazed in vent that can offer great performance and can cope with glazing thicknesses up to 47mm this is your choice.

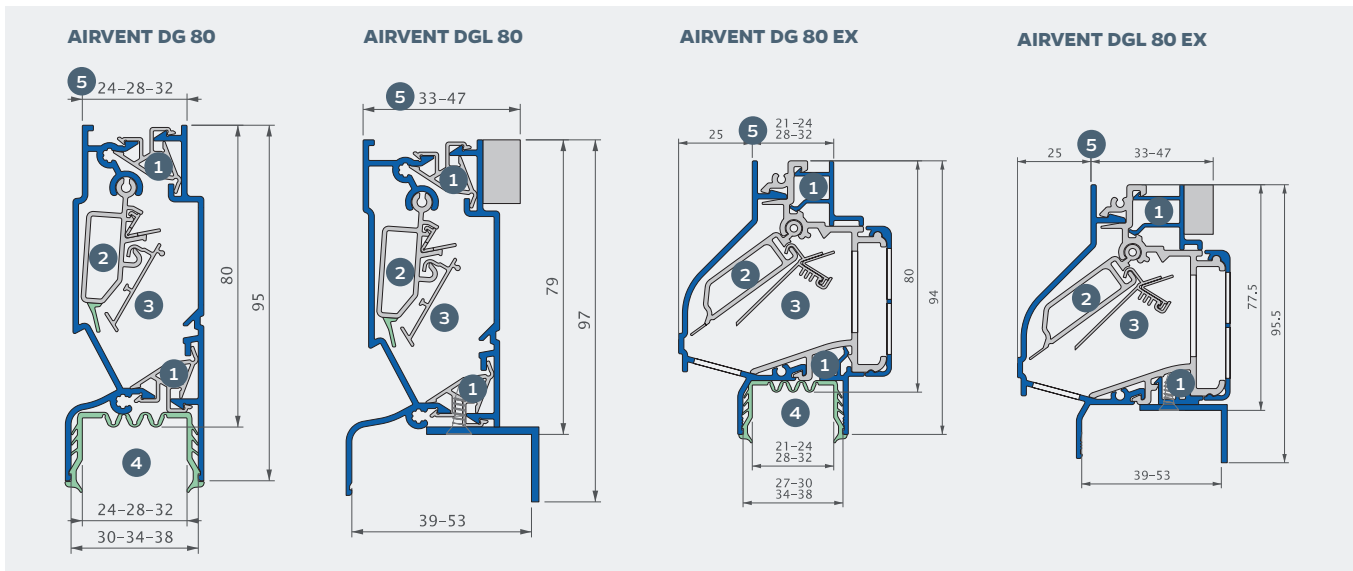


**FEATURES:**

- ✓ Over 15,000mm<sup>2</sup> per metre airflow
- ✓ Self regulation flap to avoid draughts
- ✓ Thermally broken
- ✓ Suitable for thick glazing options.
- ✓ Lever control
- ✓ Hooded or flat options



**CROSS SECTION:**



**DETAILS:**

- 1 Thermal break;
- 2 Internal closing valve, adjustable in 5 positions
- 3 Self-regulating valve to ensure a uniform air supply
- 4 Customised glazing gasket
- 5 Available in different glass thicknesses

<b>AIRVENT DG/DGL 80</b>		<b>AIRVENT DG/DGL 80EX</b>
15016 mm <sup>2</sup> /m	Equivalent Area <sup>(1)</sup>	15270 mm <sup>2</sup> /m
11.8 dm <sup>3</sup> /s/m	Air flow Q at 1 Pa	12.0 l/s/m
16,94 l/s/m	Air flow q1 at 2 Pa	14.72 l/s/m
21,39 l/s/m	Air flow q1 at 10 Pa	18.61 l/s/m
Lever or Rod (up to 2m)	Control options	5 different positions
Yes	Self-regulation	Yes
3.8 W/m <sup>2</sup> K	U-value	4.02 W/m <sup>2</sup> .K
27 (0;-1) dB	Acoustic insulation Dn, e, w (C, Ctr)	26 (0;-1) dB
38 (-1;-1) dB	— In open condition	40 (-1;-1) dB
	— In closed position	
700 Pa	Water Tightness	750 Pa
<15%	— In closed position	
0.080 m <sup>2</sup> /m	Trickle Ventilation (airflow in the closed position at 50pa)	<15%
80 mm	Surface area	0.080 m <sup>2</sup> /m
95 mm	Glass reduction	80 mm
	Installation height	94 mm
24/28/32/33-47 mm (with dry glazing gasket or silicone seal)	Suitable for glass thicknesses	21/24/28/32/33-47 mm (with dry glazing gasket or silicone seal)
2500 mm	Maximum dimensions under warranty*	2500 mm
80 mm	End cap dimension	90 mm

(1) Value for non self regulating version, according to EN 13141-1 \* Not valid for larger glass thicknesses.