

There is a reason why we call this vent the “Ultima”. Fantastic acoustic attenuation and superb weatherability makes this an excellent choice for difficult situations. Up to 47dB Dnew and available in two convenient sizes.



**External Hood**

SM ULTIMA 2960 mm2 EA: 424x51x67 [mm]\*  
SM ULTIMA 5000 mm2 EA: 584x51x67 [mm]\*



**Internal Vent**

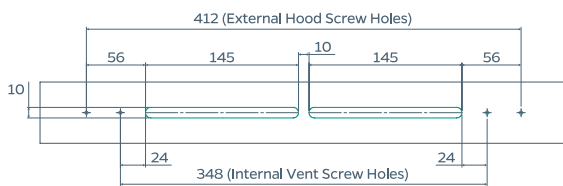
SM ULTIMA 2960 EA: 360x45x32.4 [mm]\*  
SM ULTIMA 5000 EA: 570x45x32.4 [mm]\*

\*/W x H x D/

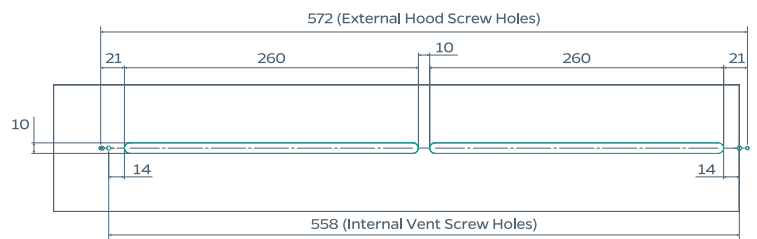
**Colours**

- White RAL 9016 [Semi-gloss]
- Bespoke RAL
- Grey RAL 7016 [Semi-gloss]

**SLOT DETAILS [mm]:**



SM ULTIMA 2960 mm² EA



SM ULTIMA 5000 mm² EA

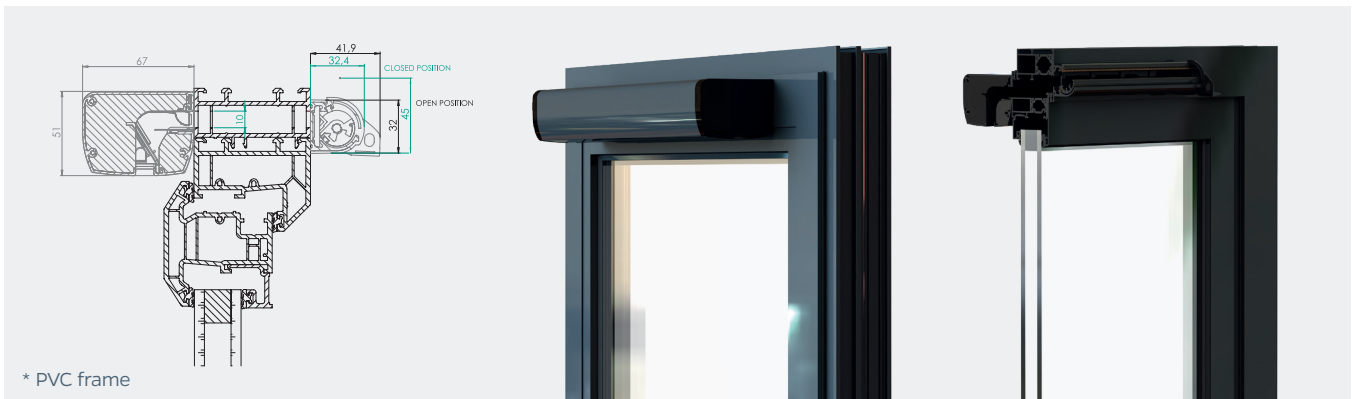
**FEATURES:**

- ✓ Up to 47db Dn,e W reduction when open
- ✓ 5000mm2 EA & 2960mm2 EA Airflow sizes
- ✓ Graduated opening for airflow control
- ✓ Wool-pile seal: Watertight up to 1000 Pa
- ✓ Natural upward airflow deflection
- ✓ Portable rod control (Optional)
- ✓ Manufactured from extruded aluminium
- ✓ Polyester powder coated
- ✓ 2 Year Guarantee

**AIRFLOW / ACOUSTIC / WATER TIGHTNESS:**

|                       | Equivalent Area<br>EA [mm²] | Open position<br>D <sub>n,e,w</sub> (C; C <sub>tr</sub> ) | Water tightness<br>(Closed Position) [Pa] |
|-----------------------|-----------------------------|---|---|
| SM Ultima 2960 mm2 EA | 2960                        | 47 (-1; -2) dB  | 1000 Pa                                   |
| SM Ultima 5000 mm2 EA | 5000                        | 39 (0; -2) dB   | 1000 Pa                                   |

**CROSS SECTION\* [mm]:**



\* PVC frame