

## Installation & Operation Guide

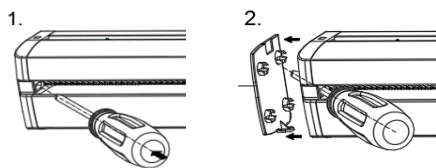


### FITTING THE INTERNAL VENT (See Table 1):

1. Place the vent over the slot and line up with the pre-drilled screw holes.
2. Screw the vent to the frame (c/w screw cover caps). Care should be taken not to over tighten the screws.

### FITTING THE EXTERNAL HOOD (See Table 1):

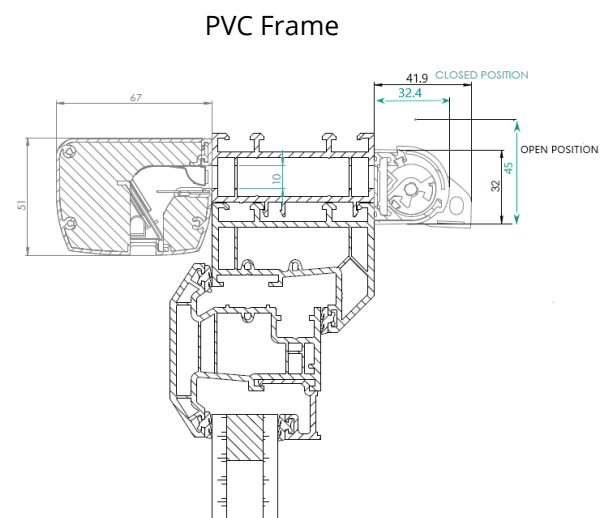
1. Remove end caps by pushing a narrow screw driver/tool through the external hood's underside opening. (See diagram below).
2. Place the hood over the slot and line up with the pre-drilled holes.
3. Screw the hood to the frame (care should be taken not to over tighten the screws).
4. Replace the push-fit end-caps.



### INSTALLATION INSTRUCTIONS:

1. Prepare the slots and pre drill the holes as per Table 1 (overleaf) avoiding glazing rebates.
2. For added weather performance, silicon sealant should be used at the top of the external hood where it meets the frame.
3. Screws should be Pan-head screws (e.g. No.6 x 5/8 self-tap Pan Pozi S/S A2). Do not use Countersunk screws.
4. The screw should be suitable for the material it is being used in.

### CROSS SECTION [mm]:



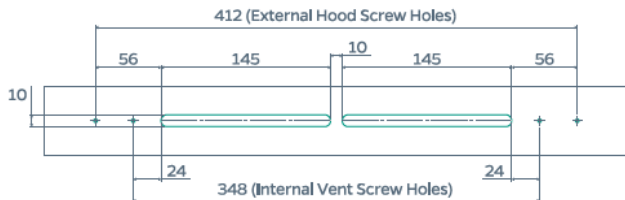
### INSTALLATION DIMENSIONS:

Table 1

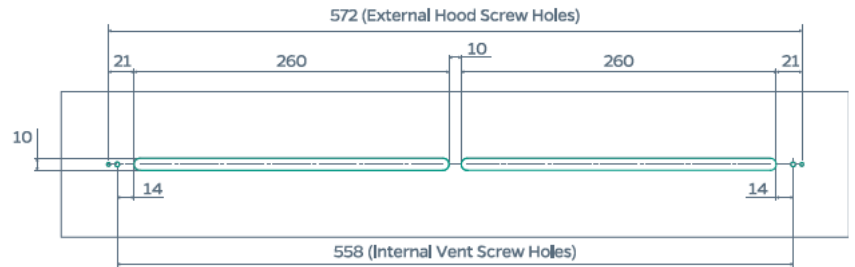
Equivalent Area (sq.mm)	O/A Slot Height (mm)	O/A Slot Length (mm)	O/A Vent Length (mm)	Vent Hole Centres (mm)	O/A Hood Length (mm)	Hood Hole Centre (mm)
2960	10	300	360	348	424	412
5000	10	530	570	558	584	572

## Installation & Operation Guide

### SLOT DETAILS [mm]:



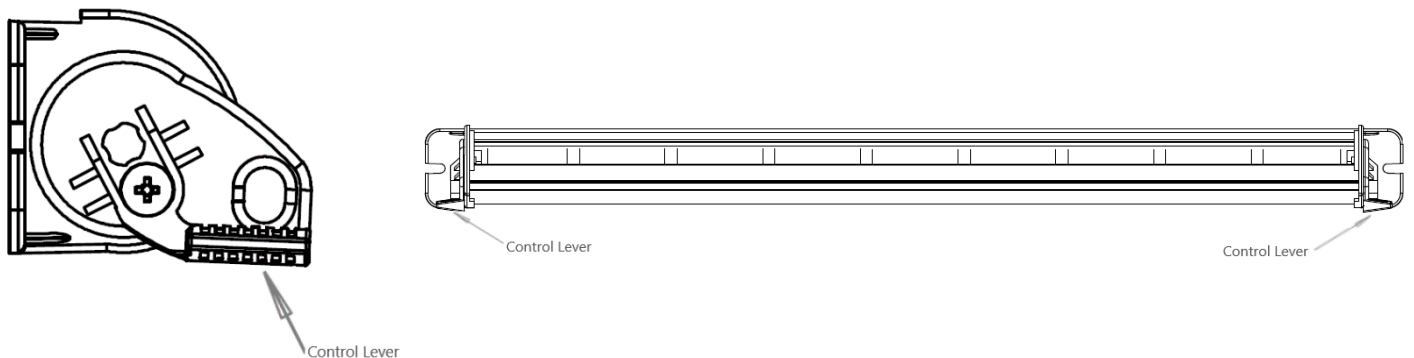
SM ULTIMA 2960 mm<sup>2</sup> EA



SM ULTIMA 5000 mm<sup>2</sup> EA

### OPERATION:

1. To open the vent, grip the control lever as indicated and pull down to the desired opening level. The SM Ultima is fully adjustable between fully opened and fully closed.
2. To close the vent, grip the control lever as indicated and push until fully closed.
3. Do not block the internal vent or external hood.
4. A portable aluminium rod is available as an accessory in lengths of 0.5m, 1m & 1.5m. The rod is inserted into the eyelet on the control lever of the internal vent. The rod is pushed up to close and pulled down to open.



For the ventilation to work effectively the vent should be left in the open position as much as possible to maintain the indoor air quality and a healthy indoor environment.

### MAINTENANCE:

The SM Ultima requires very little maintenance other than the occasional cleaning.

- Wipe the Ventilator with a clean damp cloth. The frequency at which this needs to be done is dependent on local conditions.
- Clean away blockages with a soft brush or cloth.
- Do not lubricate.
- Where there is access and it is safe to do so, the above instructions also apply to the hood.