

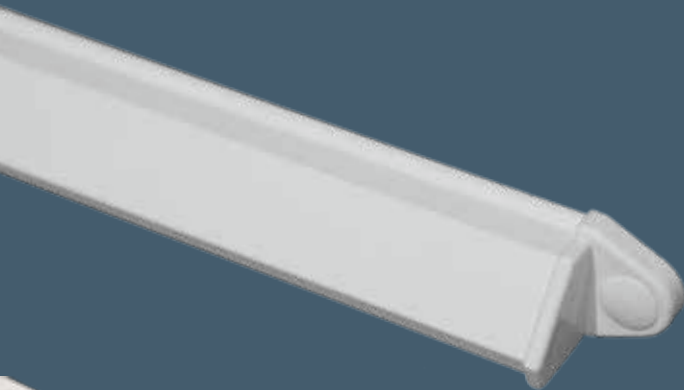
BROOKVENT

airvent

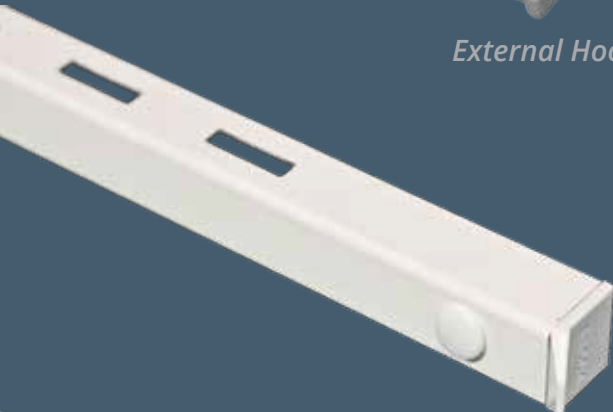


SM 1200

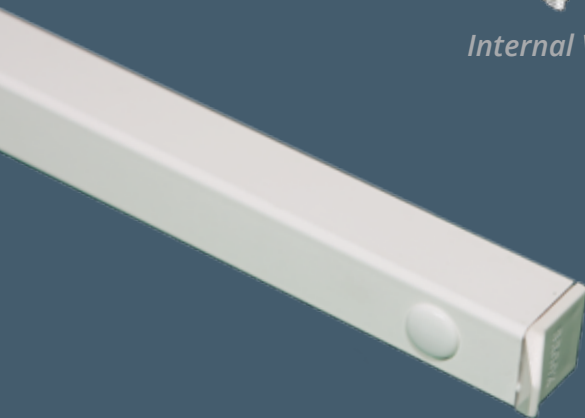
A compact, high performing Surface Mounted vent with a thermal foam seal



External Hood



Internal Vent 







Internal Vent **FC**

Features

- Manual control
- Thermal foam seal (excl. Slot Trickle and Gas Option)
- Insect grille
- Double action close position
- Manufactured from extruded aluminium
- Polyester powder coated
- 10 Year Guarantee

Options

-  Ready-made & Bespoke Sizes
-  Bar Length
- FC** Fully Controllable Ventilation
-  Upward Deflecting Slot Trickle
-  Gas Regulation Vent
(See Gas Boiler Sheet)

Colours

-  White *(HIPCA) RAL 9910 "Semi-gloss"*
-  Black *RAL 9005 "Semi-gloss"*
-  Grey *RAL 7016 "Matt"*
-  Brown *RAL 8017 "Semi-gloss"*
-  Oak *RAL 8003 "Semi-gloss"*
-  Cream *RAL 9001 "Semi-gloss"*
-  Mill Finish

Bespoke Colours and Finishes Available

Acoustics

Under normal conditions the airvent SM 1200 achieved the following Sound Reduction results:

Position	Acoustic Detail
OPEN	Up to 32 db Dnt Rw
CLOSED	Up to 43 db Dnt Rw
OPEN	Up to 30 db Dne W
CLOSED	Up to 47 db Dne W

Acoustic test data available upon request

Geometric Modular Sizes

Geometric Open Area	Equivalent Area	Overall Slot Size	Overall Vent Length	Overall Hood Length
2000mm ²	1705mm ²	13mm x 160mm	240mm	205mm
3000mm ²	2384mm ²	13mm x 235mm	315mm	280mm
4000mm ²	3200mm ²	13mm x 320mm	400mm	365mm
5000mm ²	3940mm ²	13mm x 390mm	470mm	440mm
6000mm ²	4873mm ²	13mm x 470mm	550mm	520mm
7000mm ²	5649mm ²	13mm x 540mm	620mm	600mm
8000mm ²	6495mm ²	13mm x 620mm	700mm	680mm

☰ Bespoke sizes available

Equivalent Modular Sizes

Equivalent Area	Geometric Open Area	Overall Slot Size	Overall Vent Length	Overall Hood Length
2500mm ²	3315mm ²	13mm x 255mm	335mm	300mm
3000mm ²	3900mm ²	13mm x 300mm	380mm	345mm
3500mm ²	4550mm ²	13mm x 350mm	430mm	395mm
4000mm ²	5135mm ²	13mm x 395mm	475mm	440mm
4500mm ²	5720mm ²	13mm x 440mm	520mm	485mm
5000mm ²	6305mm ²	13mm x 485mm	565mm	530mm

☰ Bespoke sizes available

Air Permeability

50 Pa 0.41 l/s (Closed Position)

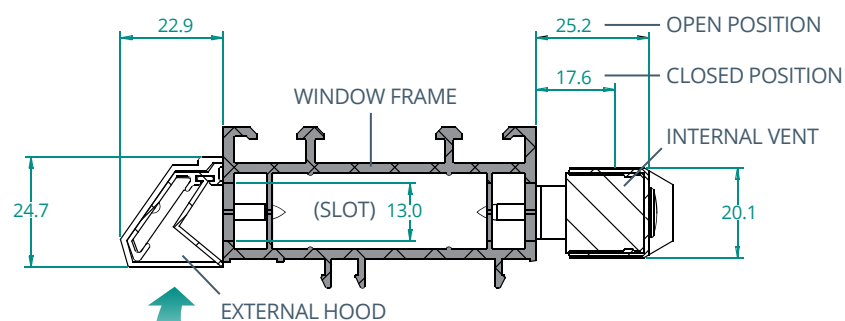
Tested to BS EN 13141-1

Water Tightness

Pressure @ No Leakage 600 Pa

Tested to BS EN 13141-1

Cross Section Dimensions



Dimensions in mm

Slot Trickle Option

In the closed position the slot trickle option provides upward deflecting, draught free, ventilation up to 2500mm²/m (Open Area)

Bar Length

Internal vent 2.45m / External hood 2.06m

